



BHARAT INSTITUTE OF TECHNOLOGY

Mangalpally, Ibrahimpatnam, R. R. District, PIN-501510

(Affiliated to JNTUH, Approved by AICTE and PCI, New Delhi. Accredited by NAAC)

7.1.2 FACILITIES AND INITIATIVES FOR THE FOLLOWING ASPECTS

ALTERNATE SOURCES OF ENERGY AND ENERGY CONSERVING MEASURES

1. Solar energy

- Solar energy is the most abundant of all energy resources and can even be useful in cloudy weather. The Institute has a facility with solar power panels that can reduce energy consumption, It is easy to handle and a greener approach. **Solar Photo voltaic Tree** was set up in the institute that supply solar power to the parking areas and some important areas within the institute.
- Electrical Energy is the most useful resource, Consumption of electricity in an economical way is highly important to the institute. Instead of filament-based lights and bulbs that consume high electric power, LED-based lights that consume less energy were replaced. The institute has taken a vow to replace all the filament bulbs with the LED bulbs soon. **Motion sensor** Lighting system is initiated within the institute. Human movement detecting sensors holders were placed at rare movement areas such as stair cases and other dark places of the campus to conserve electrical energy.

2. Waste management

➤ Solid waste management:

The institute gives a high priority to maintaining Hygienic conditions within the campus, segregation of solid waste, and effective waste management on campus. The collected waste is segregated at the source of the generation, the waste bins are placed separately for dry & wet waste at every corner of the corridor, common rooms, canteen, etc. The dry & wet wastes are collected and sent to the biogas plant of BIT to convert waste to Energy. Non-biodegradable waste and plastics are being collected separately and disposed through local municipality regularly.

➤ Liquid waste management:

Liquid waste from the canteen & the washrooms is collected into pools, recycled using four beds filtration method will further be used for watering the gardens. Fluid waste produced from the labs are diluted thoroughly and safely disposed through proper channels, where the drainage system carried out in an eco-friendly manner.

➤ Biomedical waste disposal:

Land disposal method is followed for this purpose. Animal waste from the pharmacology lab was disposed in deep pits which are closed with thick layer of sand.

➤ **E-waste management:**

The college has Initiated many e-waste management activities to support sustainable environment in the college premises.

Electronic fine tuning and small repairs are performed by the experienced and senior laboratory assistants and major repairs are handed to the technical assistants and recycled.

The major e-wastes such as written off instruments/equipments, CRTs, computers, printers are sold out.

UPS batteries are recharged, repaired /exchanged by the supplier.

All the miscellaneous wastes like batteries, fluorescent bulbs, PCBs and electronic items are collected and delivered for safe disposal.

Non-hazardous disposable items like compact discs and others are used by the students for decoration.

➤ **Waste recycling system:** The biodegradable waste is collected in separate pits converted in to vermin compost and used as manure for the plants in the garden.

➤ **Hazardous Chemicals & Radio Active Management:**

Hazardous chemicals are kept away from the reach of students. Various chemicals are stored separately in labs as per their nature (eg: Acids and bases separated) Fire extinguishers are available in all labs. Regular check on fire extinguishers is taken care of by the administration department. Labs are well-ventilated& spacious with two doors ie: Separate Entry and Exit. The chemical waste generated from the laboratories is diluted thoroughly and discarded through a proper channel, where the drainage system carried in an eco-friendly manner. The students are being educated on the Good laboratory Practices (GLP) and safe use of glass ware and chemicals. (material Safety Data Sheet) MSDS was also being explained and provided for some of the Hazardous chemicals.

3. Water conservation facilities

- The institute has Water conservation facilities. **Rain water Harvesting point** is situated at the entrance of the Pharmacy building. Water conservation bodies provided with the uplifting water Pumps also provided within the institute. The rain water will be collected separately and used for the gardening of plants in the lawn area and also to the plants located near to the pavements. For Gardening different water supplying techniques like sprinkling, drifting are provided.

4. Green Campus Initiatives

➤ **Restricted entry of automobile:**

As a part of the green campus initiative, The college follows strict rules to regulate the passage of Heavy motor vehicles which cause high environmental pollution. The Security checkpoint of the institute is headed by a senior security officer with the other persons. Each and every vehicle entering in to the institute shall have a thorough inspection by security people.

The condition of the vehicle and the pollution under control certificates also verified by the security. Registers are maintained to monitor the entry and exit of all the vehicles from the campus. All the college transport vehicles will be regularly inspected and the PUC certificates are periodically renewed. To reduce emissions The students and staff are encouraged to use public transport and Bicycles.

To reduce the number of motor vehicles in the college the students' vehicles are strictly prohibited to enter the college premises.

➤ **Use Of Bicycles:**

The students are encouraged to use the bicycles in the campus. Students staying in the near locality and the hostel premises are advised to come to the college either by walking or the bicycles.

Pedestrian friendly pathways:

For easy and safe movement of the students and staff with in college campus, The institute has pedestrian friendly pathways on both side of the roadways in the entire campus. The students and staff are strictly instructed to walk only through the footpaths while entering and exiting the college, This will enhance hassle free movement of the college vehicles and creates accident free environment within the campus.

➤ **Ban on use of plastic:**

Plastic is the main culprit for the erosions and quakes. Non degradable plastic use was banned by the government with some rules and regulation. Institute has special role in reducing the plastic waste generated from the canteen, use of plastic carry bags with above 120 microns size is not encouraged in the campus. The canteen authorities were also instructed to replace the paper packed fruit drinks instead of Heavy plastic pet bottles.

➤ **Landscaping with trees and plants:**

As a part of green campus initiative, college has planned for plantations in and around the campus, in this process various plants such as medicinal plants and environmental useful plants were procured. Through Harithaharam initiative various plants such as Coconut, Banana, Orange, Anjeer, Papayya, Mango were brought and distributed outside the campus. Various plantation programs and Swachh bharat campaigns are also organized by the institute to facilitate greener campus.

5. Disabled-friendly, barrier free environment

The institute has disabled friendly barrier. Two tactile pathways on the either side of the road has been built for easy movement of the students and staff inside the campus. Campus also facilitated with the ramp facility for the smooth moving of the disabled persons. A wheel chair was procured and kept at the entrance to ensure the safe movement of the disabled students and also for temporarily disabled students and staff. To create disabled friendly learning in the institute one of the PC in the library was installed with JAWS screen reading software, that will help the differently abled (Divyangjan) students for faster browsing and screen reading. Tactile boards and signs for library, washrooms and class rooms, office etc has been displayed.


PRINCIPAL
Bharat Institute of Technology
Mangalpally (M), Ibrahimpetnam (M),
R.R. Dist - 501 510. Telangana.

7.1.5 GREEN CAMPUS INITIATIVE POLICY

- ❖ The institute strongly believes that a green and a pollution free environment are utmost things to achieve maximum benefit for learning environment to our students as well maintains ecological balance toward society.
- ❖ Our college has vast number of plants and trees along with a medicinal garden to inculcate knowledge in the field of Pharmacognosy.
- ❖ The green initiative policy of our institute are:
 - Cleanliness in and around the campus and waste minimization
 - Water conservation and management including rain water harvesting, etc
 - Using Energy Efficient Light Bulbs.
 - Planting trees for preserving environment in campus.
 - Complete Ban on polythenes at Campus.
 - Digital Library.
 - Institute Community Garden.
 - College Automation Package



[Handwritten Signature]

PRINCIPAL

Bharat Institute of Technology
Mangalpally (V), Ibrahimpatnam (M),
R.R. Dist - 501 510, Telangana.

- ❖ In view of Knowledge is of no value unless put into practice; recently, our students have planted many plants in the campus on the eve of World Pharmacist's day 2018 with slogans let's go green to get our globe clean.




College campus & Medicinal garden

Digital Library / E-Learning Centre

Use more readout material in soft form. Reduce the hard readout material. Use more of e-mail for officially communicating the information needed, online reading etc.




PRINCIPAL
Bharat Institute of Technology
Mangalpally (V), Ibrahimpatnam (M),
R.R. Dist - 501 510, Telangana.



POLICY:

Greening the grounds is about clearing endlessly inefficient wasteful aspects and utilizing traditional wellsprings of energies for its day by day power needs, right removal dealing with, acquisition of condition well disposed supplies and compelling reusing program. Establishment needs to work out the time bound techniques to actualize green grounds activities. These techniques should be fused into the institutional arranging and planning forms with the point of building up a clean what's more, green grounds.

Save Energy TIPS:

1. Activate power management features on your computer and monitor so that it will go into a low power "sleep" mode when you are not working on it.
2. Turn off your monitor when you leave your Table.
3. Activate power management features on your laser printer.
4. Whenever possible, shut down rather than logging off.
5. Turn off unnecessary lights and use daylight instead.
6. Avoid the use of decorative lighting.
7. Use LED or compact fluorescent bulbs.
8. Keep lights off in conference rooms, classrooms, lecture halls when they are not in use.
9. Use the fans only when they are needed.



PRINCIPAL

Bharat Institute of Technology
Mangalpally (V), Ibrahimpatnam (M),
R.R. Dist - 501 510, Telangana.

PEDESTRIAN FRIENDLY PATHWAY:



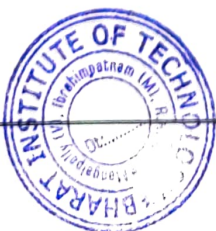
VEHICLE RESTRICTED IN CAMPUS:

Effects of carbon neutrality:

- ❖ Individual and personal transportation is prohibited in the institution for both safety and pollution free environment.
- ❖ Cigarettes and tobacco products are strictly prohibited in the campus.
- ❖ Students and staff members use college transportation facilities for college, industrial visits etc.



Vehicles are restricted inside the campus



Ravi
PRINCIPAL
Bharat Institute of Technology
Mangalpally (V), Ibrahimpatnam
R.R. Dist - 501 510, Telangana.

PLASTIC FREE CAMPUS:

Ban on polythenes

As plastic waste has emerged as one of the biggest environmental concerns adversely impacting the soil, water, health and well-being of citizens at large. We have taken the initiation to make the BIT campus "plastic free" by completely banning the plastic.

- ❖ The institution has been taken all kind of initiatives for plastic free campus
- ❖ The NSS and college also organized a program for plastic free campus



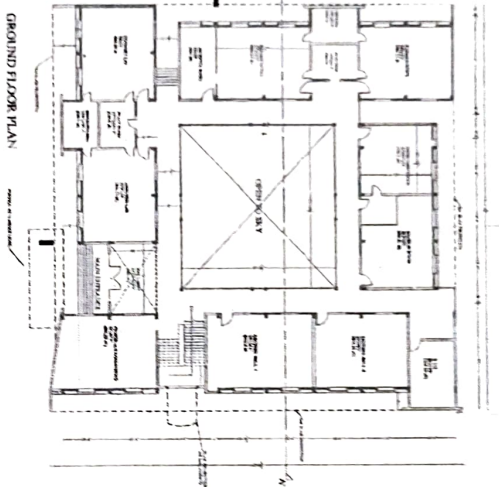
P. C. S.

PRINCIPAL

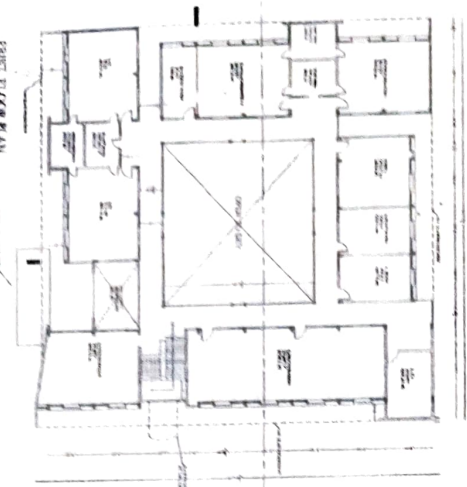
Bharat Institute of Technology
Mangalpally (V), Ibrahimpatnam (M),
R.R. Dist - 501 510, Telangana.



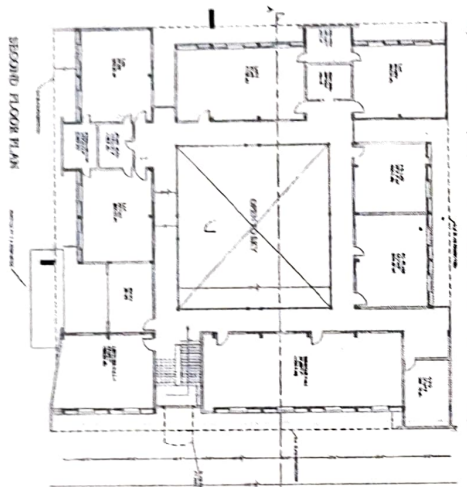
BASMENT FLOOR PLAN



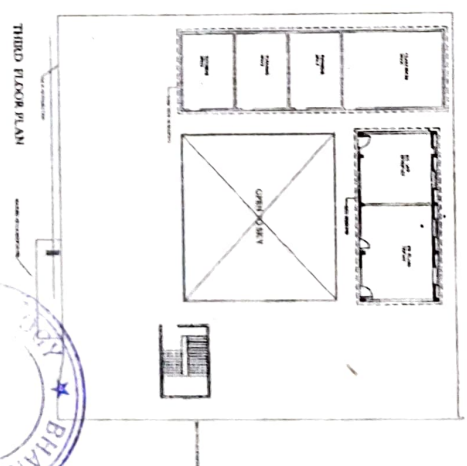
GROUND FLOOR PLAN



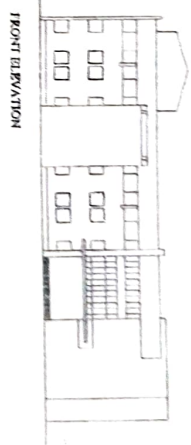
FIRST FLOOR PLAN



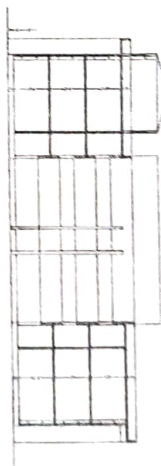
SECOND FLOOR PLAN



THIRD FLOOR PLAN



FRONT ELEVATION



SECTION AT AA'



SPECIFICATIONS

FOUNDATION : C.R.S. MASONARY IN CM
 BASEMENT : CRS MASONARY IN CM
 SUPER STRUCTURE : BRICK IN CM
 LINTES&CHAJIAS : RCC
 ROOF, COLUMNS, FOOTINGS : RCC
 PLASTERING-CEMENT
 FLOORING : P. SHABAD STONE
 DOORS& WINDOWS: WOOD&STEEL

SCHEDULE OF OPENINGS

MAIN DOOR : 2.5x2.5 M
 ALL EXTERNAL DOORS: 1.2x2.3 M
 ALL INTERNAL DOORS: 91x2.5 M
 WINDOWS : 1.37x1.37 M
 VENTILATORS : 91x50 M

AREAS

LAND AREA: 5.00 ACRES
 BASEMENT FLOOR: 4090 sq (379.53 S. m)
 GROUND FLOOR: 13646 sq (1269 Sm)
 FIRST FLOOR: 13266 sq (1234 Sm)
 SECOND FLOOR: 13646 sq (1269 Sm)
 THIRD FLOOR: 4643 sq (431 Sm)
 TOTAL PLINTH AREA: 49781 sq (4580 Sm)

REVISED BUILDING IN
 S.NOS 263(P)&264(P)
 FOR CHMR
 EDUCATIONAL
 SOCIETY AT
 MANGALPALLY (V),
 IBRAHIMPATNAM(MDL)
 R.R DIST, T.S

SCALE: 1/16

PROPOSED: _____

OWNERS SIGNATURE _____



7.1.5 Green practices

- Students , staff using
 - a) Bicycles
 - b) Public transport
 - c) Pedestrian friendly roads
- Plastic free campus
- Paperless office
- Green landscaping with trees and plants

TRANSPORTATION:

Bharat Institutions has a vast number of buses (40 in number) and provides bus facility for the staff and students from every corner of the city. Usage of Private transportation like own vehicles/bikes is not encouraged in the campus. It is mandatory to use public or college transport for both safety and eco-friendly nature. Local students are encouraged to come to college on bicycles for pollution free environment. All the college buses and vehicles used by the college members are having PUC certification, which is renewed regularly.

PLASTIC FREE CAMPUS:


College provides bags with logo and discourages the use of plastic bags. Day to day classes for the students is taught about the health hazards of plastic and simultaneously display boards displaying SAY NO TO PLASTIC/PLASTIC FREE are displayed in the campus. Tea cups and glasses for water made of stainless steel and glass are used instead of disposable plastic cups and glasses at college canteen.

PAPERLESS OFFICE:

Due to the advanced technology it became easier for maintaining paperless office. Collection of student fee from written paper document is changed to online payments for saving paper. Most of the communications in the college, greetings, official communications etc. are done by e mail and social media. Unless and until required paper printouts are not taken and most of the work is done by soft copies.

GREEN LANDSCAPING WITH TREES AND PLANTS:

70% of the campus is covered by lush greenery with lawns and beautiful trees. A medicinal/herbal garden which is helpful for learning. Plantation is done regularly by our staff and students. Recently, on the eve of world Pharmacist's day many plants were planted with slogans go green and keep our globe clean. Separate guards are paid for the maintenance of the greenery

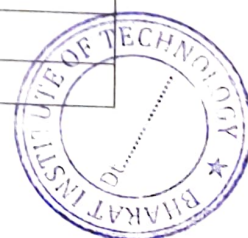

PRINCIPAL
Bharat Institute of Technology
Mangalpally (V), Ibrahimpatnem (M),
R.R. Dist - 501 510, Telangana.



LIST OF MEDICINAL PLANTS IN BIT


| SL. NO | Name of the plant | Number of plants |
|--------|-------------------|------------------|
| 1 | Ashwagandha | 05 |
| 2 | Ajwain | 01 |
| 3 | Arjuna | 01 |
| 4 | Aloe | 06 |
| 5 | Amla | 01 |
| 6 | Bael | 01 |
| 7 | Brahmi | 05 |
| 8 | Citronella | 05 |
| 9 | Guggul | 02 |
| 10 | Khus | 02 |
| 11 | Jute | 01 |
| 12 | Mango | 01 |
| 13 | Neem | 03 |
| 14 | Vinca | 06 |
| 15 | Tulsi | 06 |
| 16 | Sapota | 01 |
| 17 | Coconut | 01 |
| 18 | Vasaka | 01 |
| 19 | Tippateega | 01 |
| 20 | Seema buruga | 01 |
| 21 | Lemon | 01 |
| 22 | Tangadu | 01 |
| 23 | Ginger | 01 |
| 24 | Henna | 01 |
| 25 | Kalmegh | 01 |
| 26 | Saraswati | 05 |
| 27 | Adatoda | 05 |
| 28 | Allaneredu | 01 |
| 29 | Jilledu | 01 |
| 30 | Ganneru | 01 |

PRINCIPAL
 Bharat Institute of Technology
 Mangalpally (V), Ibrahimpatnam (M),
 R.R. Dist - 501 510, Telangana




TREES IN BIT CAMPUS

| SL.No | Name of the tree | Count |
|-------|---------------------|-------|
| 1 | Neam Trees | 412 |
| 2 | Acasia trees | 450 |
| 3 | Areca Catechu Trees | 340 |
| 4 | Wild Trees | 410 |
| 5 | Birch Trees | 446 |
| 6 | Cactus Trees | 320 |
| 7 | Cedar Trees | 458 |
| 8 | Chinar Trees | 380 |


PRINCIPAL
Bharat Institute of Technology
Mangalpally (V), Ibrahimpatnam (M),
R.R. Dist.- 501 510. Telangana.



| | | |
|----|-------------|----|
| 31 | Karanj | 01 |
| 32 | Veld grape | 01 |
| 33 | Pomegranate | 02 |
| 34 | Shikakai | 01 |


PRINCIPAL
Bharat Institute of Technology
Mangalpally (V), Ibrahimpatnam (M),
R.R. Dist - 501 510. Telangana.



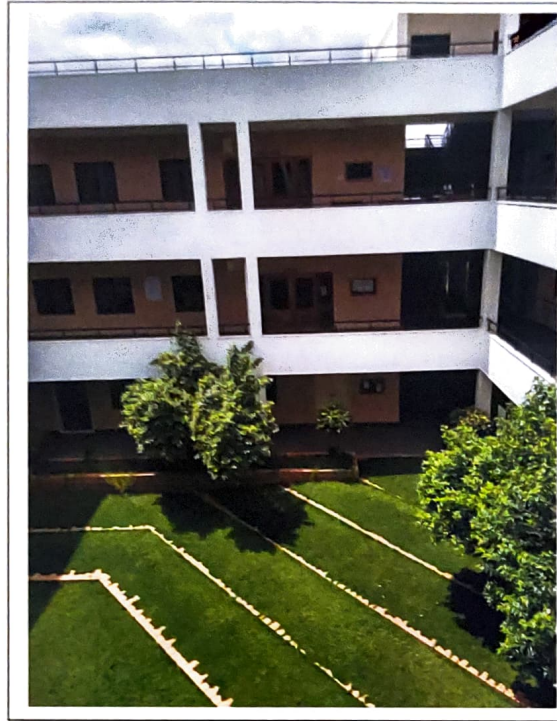
GREEN INITIATIVES

MEDICINAL GARDEN





GREEN LANDSCAPING WITH TREES



College JV Voucher

CASHIERED MEMO

NO. *BH GREEN*
NURSERY
NEAR KAMINGATE
HOSPITAL

M/S. *BH*

| Qty. | PARTICULARS | RATE | AMOUNT Rs. Ps. |
|------|----------------|------------|-------------------|
| | <i>20 x 60</i> | <i>20</i> | <i>1200</i> |
| | <i>4 x 200</i> | <i>200</i> | <i>800</i> |
| | <i>8 x 150</i> | <i>150</i> | <i>1200</i> |
| | <i>8 x 100</i> | <i>100</i> | <i>800</i> |
| | | | <i>4000</i> |
| | TOTAL | | <i>4000</i> |

* Goods once sold will not be taken back or exchanged.

E&O.E.

Signature

BHAIRAMMENT

Consumables, should obtain all formalities to pursue the material from Vendor, the indentations of P.O. and

ent / Brand

' Fixed As

tion / ab

10000
500

suffic

nt reg

material
-15077
& 3308
015,29
amount



BHARAT INSTITUTE OF TECHNOLOGY
Mangalpally (V), Ibrahimpatnam (M), R. R. District (AP) – 501510
(Approved by AICTE & PCI, New Delhi and Affiliated to JNTUH, Hyderabad)
Sponsored by: CHMR EDUCATIONAL SOCIETY
Phone: 08414-252645, e-mail: bltpharm2009@gmail.com

Date: 20/07/2018

FACILITIES AVAILABLE FOR DISABLED

As per university rules our college is providing the facilities for differently disabled such as a wheel chair, ramp, rest rooms and scribes, if such requirement will come in the future we will immediately provide scribe for disabled person.

Attested
[Signature]

Principal
PRINCIPAL

Bharat Institute of Technology
Mangalpally (V), Ibrahimpatnam (M).
R.R. Dist-501 510. Telangana.



BHARAT INSTITUTE OF TECHNOLOGY

Mangalpally (V), Ibrahimpatnam (M), R. R. District (AP) – 501510
(Approved by AICTE & PCI, New Delhi and Affiliated to JNTUH, Hyderabad)
Sponsored by: CHMR EDUCATIONAL SOCIETY
Phone: 08414-252645, e-mail: bitpharm2009@gmail.com

Date: 20/07/2018

FACILITIES AVAILABLE FOR DISABLED

As per university rules our college is providing the facilities for differently disabled such as a wheel chair, ramp, rest rooms and scribes, if such requirement will come in the future we will immediately provide scribe for disabled person.


Principal

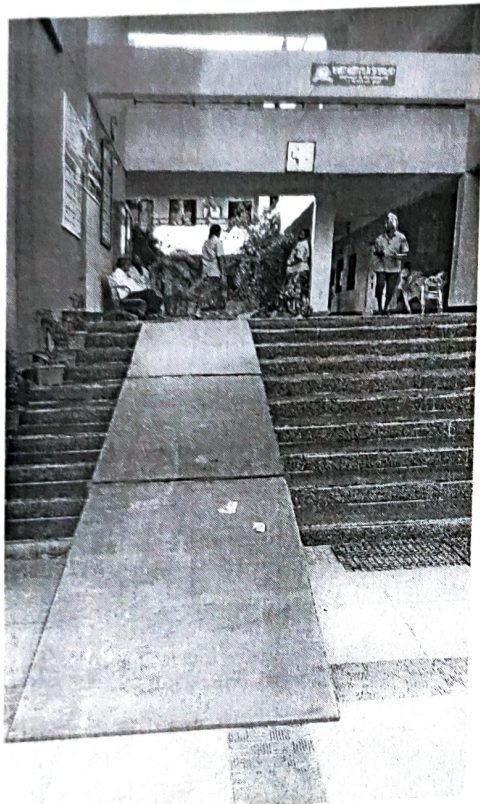
PRINCIPAL
Bharat Institute of Technology
Mangalpally (V), Ibrahimpatnam (M),
R.R. Dist-501 510, Telangana.





7.1.7 FACILITIES FOR PHYSICALLY CHALLENGED:

- ❖ Institution provides wheel chair, ramp, separate rest rooms, and lobby for physically challenged students.



Ramp

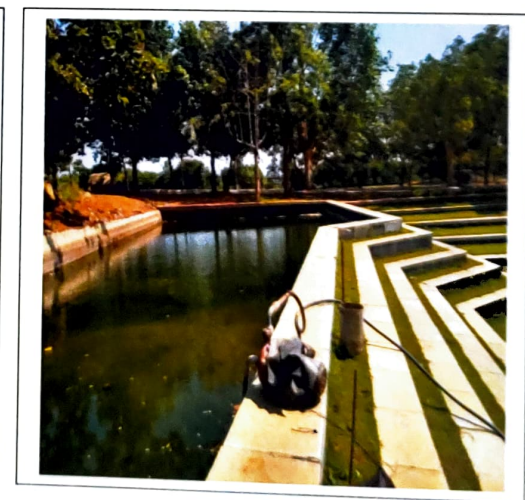
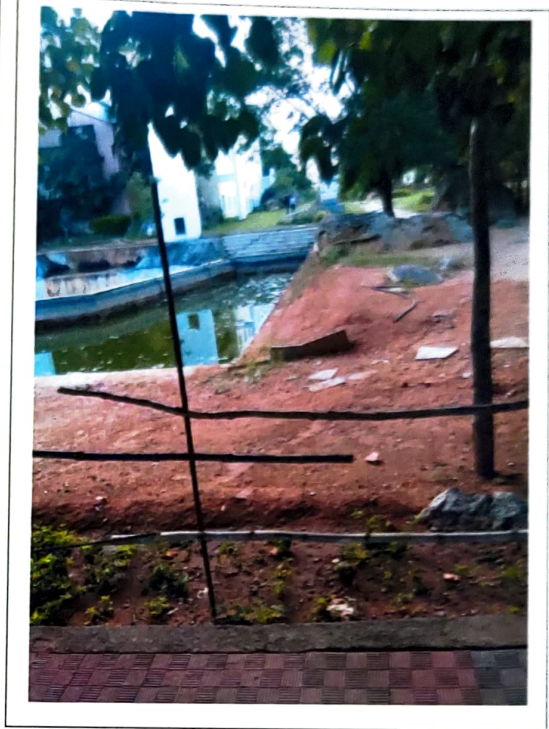


Wheel chair

R. H. L.
PRINCIPAL
Bharat Institute of Technology
Mengalpally (V), Ibrahimpetnam (M).
R.R. Dist - 501 510. Telangana.



RAIN WATER HARVESTING POINT



GREEN LANDSCAPING WITH TREES

